

Kurzweil 3000<sup>®</sup> for Windows  
Web License Guide

Version 20

(Revised July 8, 2020)

## Kurzweil 3000® for Windows Web License Edition Notices

© Kurzweil Education, a Cambium Learning Company. All rights reserved. Kurzweil Education, Kurzweil 3000, License-to-Go, KESI Virtual Printer, are registered trademarks of Kurzweil Education.

Microsoft, Windows, Windows 2003, Windows Server 2008, Windows Server 2012, Windows Vista, Windows 8, 8.1, and Windows 10 are registered trademarks of Microsoft Corporation in the United States and/or other countries.

Other product or brand names are trademarks or registered trademarks of their respective holders.

Component Acknowledgments:

*The American Heritage® Dictionary of the English Language, Fifth Edition.* Copyright © 2011 by Houghton Mifflin Harcourt Company. Published by the Houghton Mifflin Harcourt Company. No part of this database may be reproduced or otherwise used without prior written permission from the publisher unless such use is expressly permitted by applicable law.

Words are included in this Dictionary on the basis of their usage. Words that are known to have current trademark registration are shown with an initial capital and are also identified as trademarks. No investigation has been made of common-law trademark rights in any word. The inclusion of any word in this dictionary is not, however, an expression of the Publisher's opinion as to whether or not it is subject to proprietary rights, nor is it to be regarded as affecting the validity of any trademark.

*The American Heritage® Children's Dictionary* by the Editors of the American Heritage® Dictionaries. Copyright © 2009 by Houghton Mifflin Harcourt Company. Published by the Houghton Mifflin Harcourt Company. No part of this database may be reproduced or otherwise used without prior written permission from the publisher unless such use is expressly permitted by applicable law.

*The American Heritage® College Writer's Dictionary* by the Editors of the American Heritage® Dictionaries. Copyright © 2013 by Houghton Mifflin Harcourt Company. *Roget's II: The New Thesaurus, Third Edition by the Editors of the American Heritage® Dictionaries.* Copyright © 2005 by Houghton Mifflin Harcourt Company. Published by Houghton Mifflin Harcourt Company. No part of this database may be reproduced or otherwise used without prior written permission from the publisher unless such use is expressly permitted by applicable law.

No investigation has been made of common-law trademark rights in any word. Words that are known to have current trademark registration are shown with an initial capital and are also identified as trademarks. The inclusion or exclusion of any word, or its capitalization in this dictionary is not, however, an expression of the Publisher's opinion as to whether or not it is subject to proprietary rights, nor is it to be regarded as affecting the validity of any trademark.

RealSpeak™ © Nuance Communications, Inc. All rights reserved.

Vocalizer Automotive™ © Nuance Communications, Inc. All rights reserved

Acapela Text-to-Speech from Acapela Group.

OpenDyslexic font. © OpenDyslexic.

Homophones and confusables word lists from WordSpring™ software. © 2002 Lexia Institute.

Additional product components are licensed from ABBYY™; Bennet-Tec Information Systems, Inc.; Nuance Communications, Inc.; and Vantage Technologies.

MPEG Layer-3 audio coding technology licensed from Fraunhofer IIS and Thomson.

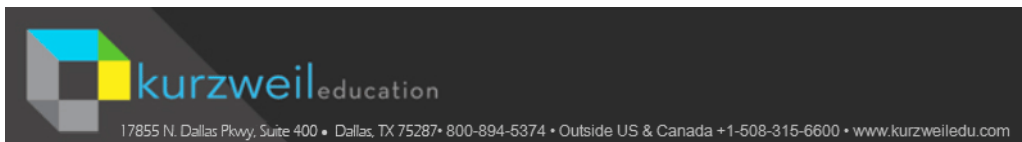
The Picture Communication Symbols samples © 1981-2004 Mayer-Johnson, Inc., Solata Beach, CA. USA. All rights reserved worldwide.

Widgit Picture Dictionary. © Widgit Software.

NIMAS Sample files created by the AIM and NIMAS Centers at CAST, Inc. with support from the Office of Special Education, US Department of Education.

Note About Copyrighted Material

If you upload or install source materials or any other materials on any computer, including, without limitation, your computer, a local area network, or a web-based computer hosted by Kurzweil Education, Inc., you hereby acknowledge that you have all of the necessary ownership or licensed rights to load such materials and shall fully indemnify Kurzweil Education, Inc. from any claims that may arise relating to such actions.



# Table of Contents

---

---

<b>Web License Overview, Set Up and Management .....</b>	<b>1</b>
Kurzweil 3000 Web License Overview .....	2
Web License System Requirements.....	5
Installing Web License Client Software.....	5
Install the Software from Kurzweiledu.com Download .....	6
Install from the Kurzweil 3000 DVD .....	6
Installing the Web License Client Using the MSI Install (IT Professionals) ...	7
Acapela Voice Sets .....	8
Installing Additional Acapela Voice Sets .....	8
Downloading and Installing from the Kurzweil 3000 Website .....	9
Installing from the DVD .....	10
Microsoft Speech Platform.....	11
Automatic Software Updates .....	12
Working with User Accounts and License Allocation.....	14
<b>Web Universal Library .....</b>	<b>15</b>
The Web Universal Library Overview .....	16
Web Universal Library Structure .....	16
Using the Web Universal Library .....	17
Supported File Types .....	17
<b>Index .....</b>	<b>24</b>

# 1 Web License Overview, Set Up and Management

---

---

The information in this chapter is arranged into the following topics:

- [Kurzweil 3000 Web License Overview](#) on page 2.
- [Web License System Requirements](#) on page 5.
- [Installing Web License Client Software](#) on page 5.
- [Installing the Web License Client Using the MSI Install \(IT Professionals\)](#) on page 7.
- [Acapela Voice Sets](#) on page 8.
- [Microsoft Speech Platform](#) on page 11.
- [Working with User Accounts and License Allocation](#) on page 14.

## Kurzweil 3000 Web License Overview

Welcome to Kurzweil 3000 Web License Edition. If you are a Web License user, you can access all of the program's features from any computer that has Internet connection and that is running the Web License Client software.

Kurzweil 3000 maintains personal settings, documents and work, even if you switch computers or go wireless.

### **Licenses for Using Kurzweil 3000 Over the Internet**

Kurzweil 3000 Web License product offers convenient, secure Kurzweil 3000 license check in/out through the Web.

Unlike Network Edition licenses, the storage and management of which are on the local network, Web licenses are stored and managed by Cambium Learning and delivered to users over the Internet.

In addition to placing less of a burden on a school's technology team, Web Licensing allows users to access licenses and run Kurzweil 3000 from any computer on which the Kurzweil 3000 Web License Client software is installed, and from anywhere on the Internet, while taking personal settings and preferences with them.

### **Web License Users**

There are three types of users:

- Designated License Coordinator who is set up by Cambium Learning for the organization. This user has the ability to create and manage sub-users and to allot licenses to those sub-users, which can include Student users. When viewing user information, this user can see and change all of his/her sub-users' information. When viewing Universal Library contents, this user can access all of his/her sub-users' folders.
- Site coordinator who could be a teacher, principal, or other school authority. Set up by the organization's license coordinator, this user has the ability to create and manage sub-users, including Student users, and to allot licenses to those sub-users. When viewing user information, the site coordinator/teacher user can see and change all of his/her sub-users' information. When viewing Universal Library contents, this user can access all of his/her sub-users' folders.

- Student users are created and registered by any user who can create sub-users. They cannot, however, have sub-users, nor have access other users' folders in the Universal Library except Public ones created by their teachers or for the organization.

### **Complemented by Web-Based Universal Library**

Included with the Kurzweil 3000 Web License Edition is the Web Universal Library, a robust file repository that provides leveled access to files and documents.

The Web Universal Library enables districts or schools to widely distribute curriculum, and share and reuse material. Any user can upload district-wide curriculum and resource files. Teachers are able to post classwork, and students can access those files and documents from anywhere on the Internet, from any Kurzweil 3000 Web Client computer, at any time.

The Web License Universal Library also includes the Classic Literature collection of nearly 2000 public domain electronic text, from literary classics, factbooks, and references to religious and historical documents.

For additional details about the Web Universal Library, see [Chapter 2, Web Universal Library](#).

### **All Preferences, Customized Lists, Dictionaries and Settings Travel with the User**

Kurzweil 3000 Web License system maintains each user's personal preferences, settings and any feature that is customizable, including Toolbar sets, Word Lists, OCR Corrections list, and Word Prediction and Spell Check, dictionaries, are stored on the Kurzweil 3000 Web License server as well as locally on the Client computer. Upon logging in, Kurzweil 3000 checks both locations and uses the latest settings from either location.

Saving a Toolbar Set saves to the Web License server so that others with permissions can access the set.

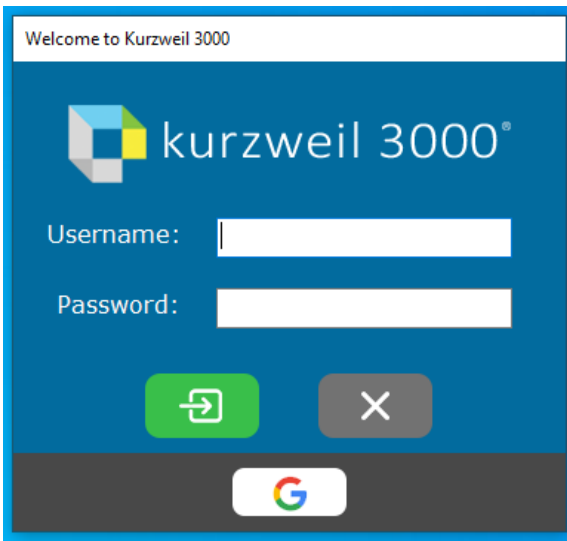
## How Does Web License Work?

Once your organization completes the Web License product purchase process, an IT specialist installs the Web License Client Software, and an initial user account is set up by Cambium Learning Customer Service for a designated License Coordinator.

That initial user, who could be a school administrator, IT specialist, even a teacher, then creates sub-user accounts for sub-site coordinators at different schools, teachers and/or students. At the time of user setup, the system generates login information — a username and password — for each user.

Each user, other than Student users, can set up and manage sub-users under his/her account.

To access Kurzweil 3000, log in using the Kurzweil 3000 desktop icon on a computer running Web License Client software. The Kurzweil 3000 login screen opens.



Log in using your Username and Password, or select the Google button to sign in with your Google classroom credentials if your school district allows it.

## Web License System Requirements

Processor: 1.3 GHz Pentium 4 or better.

System Memory: 2 GB.

Hard Disk Space: 2 GB free space.

Operating System: Microsoft® Windows 10, 8.1, 8.

Video RAM: 4 MB or better.

Screen Resolution: 1024x768 24-bit or better.

Color Palette: 16-bit.

Keyboard and mouse.

Sound card with speakers and microphone.

TWAIN-compatible scanner or Document camera (HoverCam or SCEye).

Internet connection.

Web browser: Mozilla Firefox V50 or later or Chrome for Read the Web functionality.

**Note:** For the latest system requirements, please visit our web site:  
<https://www.kurzweiledu.com/includes/new-windows-system-requirements.html>.

## Installing Web License Client Software

You will need Administrator privilege. You can download the Kurzweil 3000 Web License edition from [www.kurzweiledu.com/k3win](http://www.kurzweiledu.com/k3win) or use the Kurzweil 3000 DVD.

**Note:** If any previous version of the Kurzweil 3000 Web License edition is installed on any computer that is or will be a Client computer, you must uninstall it before installing the current Kurzweil 3000 Web License software



### ***Install the Software from Kurzweiledu.com Download***

1. Go to [www.kurzweiledu.com/k3win](http://www.kurzweiledu.com/k3win) and select the Kurzweil 3000 Web License link.
2. Choose **Save** to save the file. This will take some time.
3. When the download has completed, double-click the **.exe** file to continue. An Installation dialog pops up.
4. Choose a destination folder for installation files to be extracted to and click **Install**.
5. When the extraction has completed, select **Install Web Licensing Software** in the window that displays and follow the prompts to finish installing the software.
6. **Restart** if prompted to do so.

### ***Install from the Kurzweil 3000 DVD***

1. Place the Kurzweil 3000 DVD in the computer's DVD drive.
2. Double-click the **Setup** file.
3. In the Master Installation dialog, select **Web Licensing Software**.
4. Select **Install Web Licensing Software** in the window that displays and follow the prompts to finish installing the software.
5. **Restart** if prompted to do so.

You are ready to log in to and use Web License Edition by clicking the Kurzweil 3000 icon.

**Note:** If you are an Administrator user, whenever you launch Kurzweil 3000, the system checks for the latest software update. If one is found, you can opt to do one of the following:

- Choose **No** to not install the update and have Kurzweil 3000 launch normally.
- Choose **Don't Ask Me Again** to disable future auto update system checks.
- Choose **Yes** to install the update now. Once the install is complete, Kurzweil 3000 launches.

## Installing the Web License Client Using the MSI Install (IT Professionals)

This option installs the Web License Client computers across your Local Area Network from a central location. It is provided for network administrators who are knowledgeable about MSI packages and have the necessary tools to operate directly on an MSI package.

The following must be installed before doing the MSI install:

- Microsoft .Net Framework 4.8 Full
- Microsoft Visual C++ 2013 Redistributable Package x86 (all operating systems)
- Microsoft Visual C++ 2019 Redistributable Package x86 (all operating systems)
- Microsoft Visual C++ 2019 Redistributable Package x64 (64 bit OS only, AFTER installing the x86 packages)

You will need to specify the following arguments as properties to the Kurzweil 3000 msi package. You must also use the Reduced UI option.

AUTO=1 (should be a numeric value of 1, with no spaces before or after the '=')

EDITION="web"

AUTOUPDATE=0 (Zero, with no spaces before or after the '=', sets the automatic software update to no updates; using 1, with no spaces before or after the '=', sets the automatic software update to yes)

An example to launch Version 20 through command line is as follows:

```
msiexec.exe /i "Kurzweil 3000 v.20.msi" AUTO=1 EDITION="web"  
AUTOUPDATE=0 /qn
```

where /i is the install switch and /qn is the No UI switch.

## Acapela Voice Sets

The Default Voices set of five Acapela voices is installed automatically during the Kurzweil 3000 installation. The Default Voices included with Kurzweil 3000 are:

- English USA: Heather
- English USA: Will
- English USA: Tracy
- French Canadian: Louise
- Spanish North America: Rosa

## Installing Additional Acapela Voice Sets

The additional Acapela Voice sets include access to more than a dozen voices in a variety of languages. All except the Acapela European Voices Three\* are available on a DVD. All voice sets can be downloaded from the Kurzweil 3000 website. Following are the additional voice sets and the voices contained in each set.

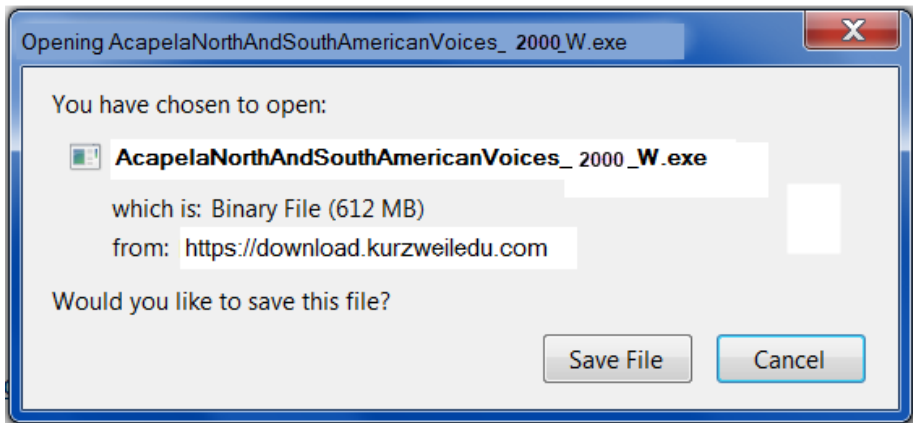
<b>Acapela English Non US Voices</b>	<b>Acapela European Voices One</b>	<b>Acapela European Voices Two</b>
English Australian – Lisa	Dutch – Femke	German – Klaus
English Australian – Tyler	Dutch Belgian – Jeroen	German – Claudia
English Indian – Deepa	Dutch Belgian – Sofie	Portuguese – Celia
English UK – Lucy	French – Manon	Italian – Fabiana
English UK – Peter	French - Antoine	Italian – Vittorio

<b>Acapela European Voices Three</b>	<b>Acapela North and South American Voices</b>
Swedish – Emma	English USA – Sharon
Swedish – Erik	English USA – Rod
Danish – Rasmus	English USA – Ryan
Norwegian – Kari	Spanish North America – Rodrigo
Finnish – Sanna	Portuguese Brazil – Marcia

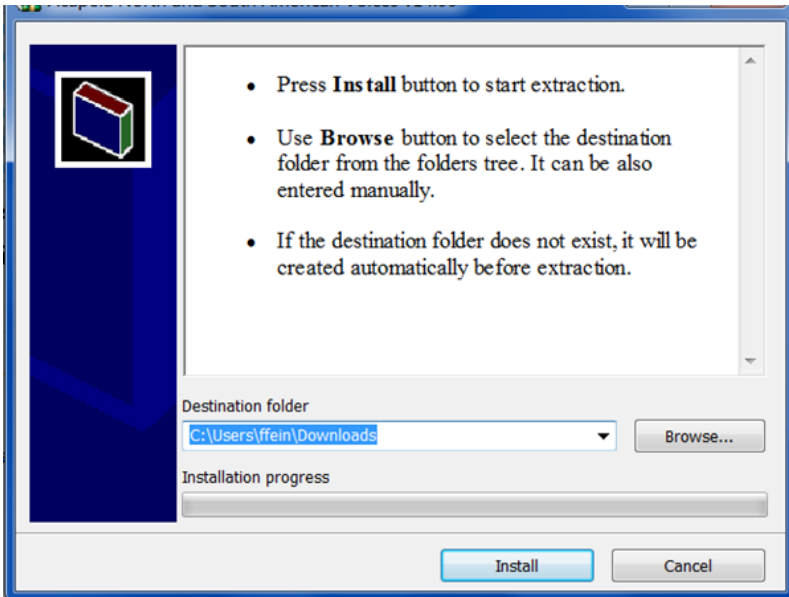
*\*The Acapela European Voices Three is available only by downloading from the Kurzweil 3000 website. It is not included on the DVD.*

## ***Downloading and Installing from the Kurzweil 3000 Website***

1. Go to <https://www.kurzweiledu.com/k3win>. Use the information shown in the tables on the previous page to determine the voice set to download.
2. In the list of Acapela voices, click the link next to the voice set to download, for example, Acapela North and South American Voices. A dialog pops up:



3. Choose **Save File** to save the file. This will take some time. When it has finished downloading, the **.exe** file will appear in the download folder, for example, **AcapelaNorthAndSouthAmericanVoices\_2000\_W.exe**.
4. Double-click the **.exe** file to continue. An Installation dialog pops up.



5. Choose a destination folder to extract the installation files to and click **Install**.
6. When the extraction has completed, follow the prompts in the InstallShield Wizard to complete the installation.

### ***Installing from the DVD***

1. Open the folder containing the voice set that you want to install.
2. Double-click the **.exe** installation file to start the installation.
3. Follow the instructions to complete the installation.

## Microsoft Speech Platform

The Microsoft Speech Platform Runtime 11 delivers access to more than a dozen additional voices in a variety of languages. You can choose and adjust the many voice options to suit your individual preference.

### Installation

The Microsoft Speech Platform is included on the Kurzweil 3000 DVD in a folder named "MicrosoftSpeech." A setup program is provided by Microsoft which handles the installation.

**Note:** These voices can be used with Windows 8, 8.1 and 10.

## Automatic Software Updates

Whenever you install or launch Kurzweil 3000, the system checks for available software updates. To automatically have the updates installed, check "Turn on Automatic Update" in the General Options dialog. After the installation has completed, you can restart Kurzweil 3000.

If you don't have "**Turn on Automatic Update**" checked and updates are found, you will be prompted whether to install the update. You can opt to do one of the following:

- Choose **No** to not install the update and have Kurzweil 3000 launch normally.
- Choose **Don't Ask Me Again** to disable future auto update system checks.
- Choose **Yes** to install the update now. Once the install is complete, you can restart Kurzweil 3000.

### Notes:

- Automatic software updates are only enabled for users with Windows administrative privileges. This option is grayed out for users who do not have Windows administrative privileges
- To receive Kurzweil 3000 updates, you may need to customize your Windows Firewall settings to allow Kurzweil 3000 to receive updates through the Firewall.
- Restart the Kurzweil 3000 Taskbar after an update, if desired (it is not automatically restarted after an update).

## Firewall Settings for Receiving updates

### For Windows 8, 8.1, and 10

1. Go to the Windows Control Panel.
2. In the search box, type firewall.

3. From the search results, select Windows Firewall and allow an app or feature through Windows Firewall.
4. In Allowed apps and features, select Kurzweil 3000.



## Working with User Accounts and License Allocation

After your organization purchases a number of Web Licenses, Cambium Learning Customer Service sets up the initial user (typically, this is a designated site coordinator who could be teacher, school administrator or IT specialist). He/she is given username and password for login.

The site coordinator/initial user can then set up the site users, providing them with their system-generated usernames and passwords, and allocating licenses.

Once that is done, any user can log in, set up, manage and distribute licenses to sub-users under their accounts.

Sub-users are typically teachers who set up their own sub-users, typically students. Student users, however, do not have User Management access.

For information about Accessing the User Management System, Registering Users, Viewing and Managing Licenses, Managing Users, and more, refer to the Product Guide "User and License Management" on:

<https://www.kurzweiledu.com/products/software-updates.html>

# 2 Web Universal Library

---

---

The information in this chapter is arranged into the following topics.

- [\*The Web Universal Library Overview\*](#) on page 16 has the following subsections:
- [\*Templates \(Brainstorm for Higher Ed, K12 and Teachers\)\*](#). on page 16.
- [\*Using the Web Universal Library\*](#) on page 17 has the following subsections:
  - [\*Supported File Types\*](#) on page 17.
  - [\*To save an open document to the Library:\*](#) on page 20.
  - [\*To create a new folder:\*](#) on page 21.
  - [\*To cut, copy, delete, rename a folder or file:\*](#) on page 22.
  - [\*To view file properties:\*](#) on page 22.

## The Web Universal Library Overview

Kurzweil 3000 Web License Edition includes the Web Universal Library. If your school uses the Kurzweil 3000 Local Area Network (LAN) Universal Library, you are already aware of the benefits of central file storage and sharing.

The Kurzweil 3000 Web Universal Library, however, is an expanded version of the LAN Universal Library. Because the Web Universal Library is Internet-based, it allows students and teachers, or any authorized users, using any computer running Web License Client software from anywhere on the World Wide Web, to access and share files.

For districts and schools, the Web Universal Library is ideal for placing standardized curriculum material and print resources in electronic form for all or for specific groups to access. Teachers can make class files available wherever, whenever students need them.

Included in each Web Universal Library are the following folders:

- Classic Literature, a collection of nearly 2000 books, historical documents selected from the public domain.
- Samples, files from Cambium Learning Group's published educational series, LANGUAGE!, Learning A-Z and Passport Reading Journeys.
- Nonfiction Bookbag with inspiring content for Grade Levels 3-8.
- Templates (Brainstorm for Higher Ed, K12 and Teachers).

## Web Universal Library Structure

The structure of the Universal Library is based on user/sub-user file system concept where each authorized user can set up and manage his/her sub-users.

In addition to sub-user folders, each user also has a Public folder and a Private folder. All users have Read-Write permission to his/her own and to sub-users' Public and Private folders

Sub-users only have Read access to the Public folder of the user who created their account.

For example, a district could set up folders for each school. In a school's folder, there could be folders for teachers as well as a Public and a Private folder. All teachers and students in the school could access the school's Public folder. Teachers would not be able to access one another's folders.

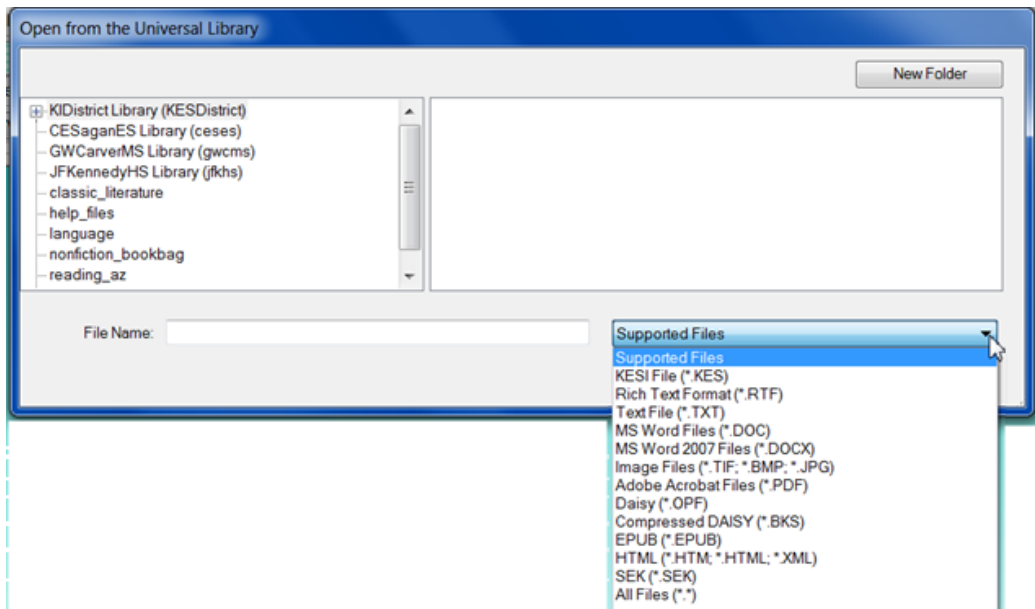
Each teacher folder in turn would have the teacher's students' folders, plus a Public and Private folder. All students whose accounts a teacher creates would be able to access their teacher's Public folder. Students would not be able to access one another's folders.

## Using the Web Universal Library

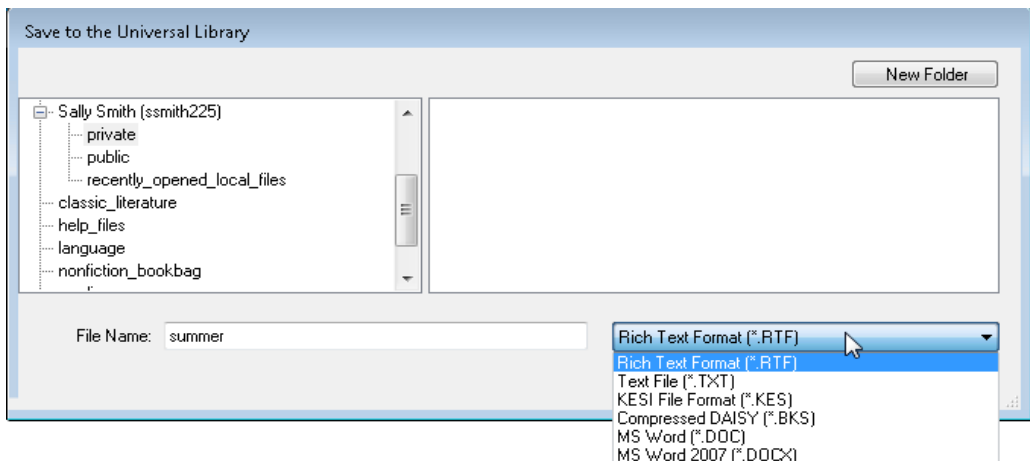
You can open and save to the Universal Library and manage folders and files by using either the **Open from the Universal Library** or **Save to the Universal Library**.

### Supported File Types

The Web Universal Library currently supports several file types. The file types you can open are listed in the **Supported Files** drop-down menu in the **Open from Universal Library** dialog. These include KES, K3C, RTF, TXT, DOC, DOCX, TIF, BMP, JPG, JPEG, PNG, PDF, OPF, BKS, EPUB, HTM, HTML, and XML.

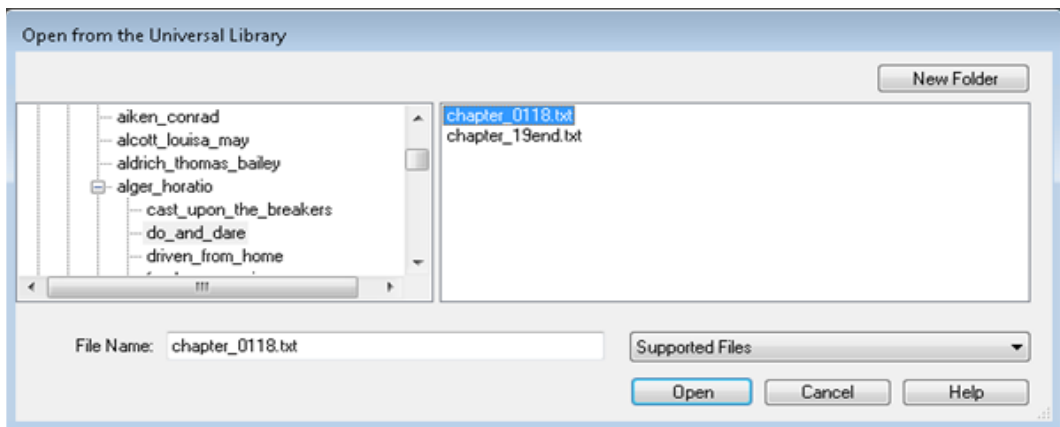


The file types you can save as are listed in the **Supported Files** drop-down menu in the **Save to the Universal Library** dialog. These include KES, BKS, TIF, RTF, TXT, HTML, HTM, DOC, and DOCX.



**To open a document from the Library:**

1. There are three ways to open a document from the Universal Library:
  - From the **Kurzweil 3000** tabbed page in the **Read** section, click the **Open** button and choose **Open from the Universal Library** from the flyout menu.
  - From the **Read** toolbar, click the **Open** button and choose **Open from the Universal Library** from the flyout menu.
  - From the **File** menu, choose **Open from Library**.
2. In the **Open from the Universal Library** dialog, in the left-hand pane, click the folder from which you want to open a file. You may have to open subfolders. In the example below a subfolder in the Classic Literature folder is selected in the left-hand pane; its content files are listed in the right-hand pane.



3. In the right-hand pane, select the file you want.
4. Click **Open**.

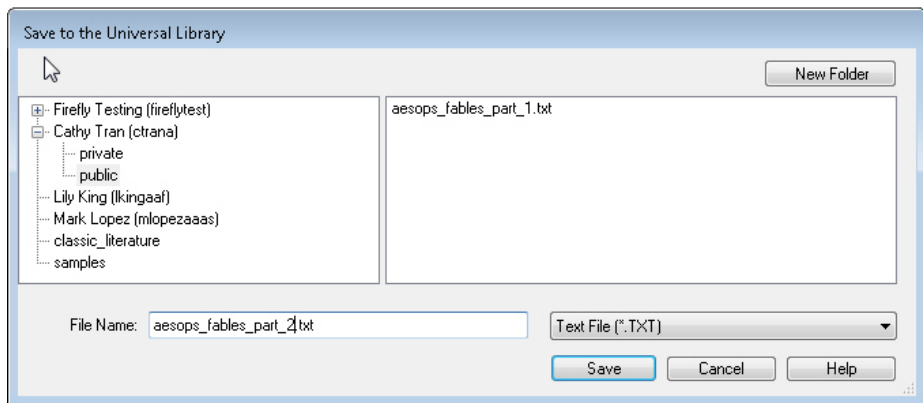
**Notes:**

- No user can save files to the Universal Library Classic Literature folder.
- You can also search for a Classic Literature file by using Online Search; for more information, go to online Help.

### To save an open document to the Library:

1. Open the document you want to save to the library.
2. There are two ways to save to the library:
  - From the **Read, Write, or Scan** ribbon click the **Save** button and choose **Save to Library** from the flyout menu..
  - From the **File** menu, choose **Save to Library**.

The **Save to the Universal Library** dialog opens.



3. In the dialog, do the following:
  - Specify where you want to place the file by clicking the desired folder in the left-hand pane.
  - (Optional) If you want to create a new folder in which to save this document, click the **New Folder** button in the upper right-hand corner.
  - (Optional) Change the file name. Note that only lowercase letters, numerals and underscores are permitted in file/folder names.
  - (Optional) Specify another file format.
4. Click **Save**.

**Notes:**

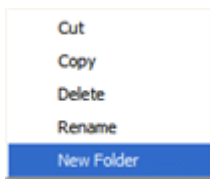
- When saving a file, you are essentially uploading it to the Web server, and the time and speed by which a file is uploaded depend on the Internet line and service that your site is using. Generally, we recommend 50 pages or fewer per file, so if you have a rather large text book, it's a good idea to separate the chapters and save a chapter at a time.
- No user can save files to the Universal Library Classic Literature folder.

**To create a new folder:**

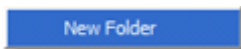
You can only create a new folder under your or your sub-users' folders.

1. From the **File** menu, choose either **Open from Library** or **Save to Library**.
2. In the dialog, in the left-hand pane, click the folder in which you want to place the new folder.

3. There are a few places where you can find the New Folder command:  
In the left-hand pane, open the Right Mouse Button menu and choose **New Folder**.



In the right-hand pane, open the Right Mouse Button menu and choose **New Folder**.



Or in the upper right-hand corner, click the **New Folder** button.



4. Type the name of the folder in the **Folder Name** box that appears. Note that only lowercase letters, numerals and underscores are permitted in file/folder names.



5. Click **Add**.

### To cut, copy, delete, rename a folder or file:

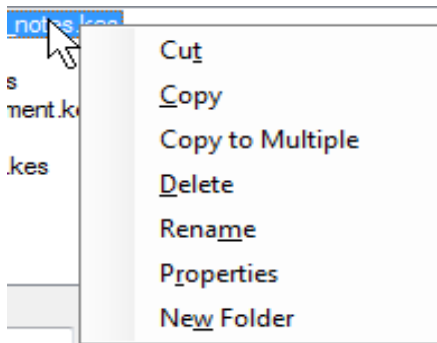
Note that you can only cut, copy, delete, rename a folder or file under your or your sub-users' folders. In addition, only lowercase letters, numerals and underscores are permitted in file/folder names.

1. From the **File** menu, choose either **Open from Library** or **Save to Library**.
2. In the dialog, do one of the following:

For a folder: Select the folder in the left-hand pane.

For a file: First, in the left-hand pane, select the folder in which the file(s) are located. Next, select the file(s) from the right-hand pane.

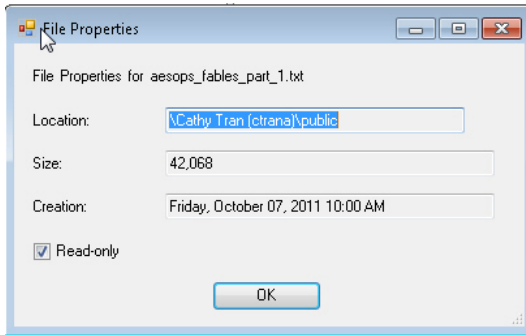
3. Right-click to open the Right Mouse Button menu and choose the command you want. The menu below is the File Right Mouse Button menu. The Folder menu is similar, but does not have Properties.



### To view file properties:

1. From the **File** menu, choose **Open from Universal Library**.

2. In the dialog, in the left-hand pane, select the folder in which the file is located. Next, select the file from the right-hand pane.



3. Right-click to open the Right Mouse Button menu. Select **Properties** to open the **File Properties** dialog.
4. Click **OK**.

# Index

---

---

## A

- Acapela voice sets
  - additional 8
  - installing additional 8
- Automatic Software Updates 12

## C

- Camera support 5
  - creating
    - a new folder in Web Universal Library 21
  - customized lists 3

## D

- dictionaries 3

## F

- file management
  - in Web Universal Library 22
- File Properties
  - in Web Universal Library 22
- Firewall Settings for Receiving updates 12

## G

- Google button 4

## H

- HoverCam 5

## I

- installing
  - additional Acapela voice sets 8
  - Web License Client software 5
  - Web License Client software using MSI 7

## K

- Kurzweil 3000
  - using over the Internet 2

## L

- license allocation 14

## M

- Microsoft Speech Platform Runtime 11
- Voices
  - Installing 11

## N

- New Folder 21

## P

- preferences 3

## S

- saving
  - a document to Web Universal Library 20

- SCEye 5

- Settings 3

- settings 3

- system requirements 5

## U

- user accounts 14

## W

- Web License
  - how it works 4
  - user management 14
  - user types 2
- Web License Client software
  - installing 5
  - installing using MSI 7
- Web Universal Library
  - about 3
  - creating a new folder 21
  - file management 22
  - File Properties 22
  - overview 16

---

---

saving a document to 20  
structure 16

supported file types 17, 18