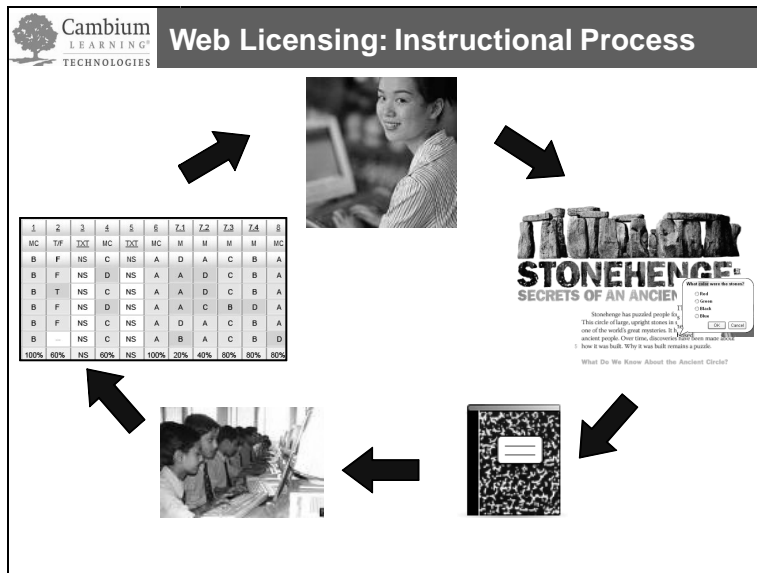


Kurzweil 3000 Version 12 Web License



Web Licensing (V12 with VPORT):

Teachers can now:

- Create Kurzweil 3000 Assignments and save to a *central* location
- Publish and Assign work to students and monitor progress
- View reports of individual and whole class usage and performance via the VPORT Online Data Management System

Anytime, anywhere access to a Kurzweil 3000 license via the web, from any computer with Internet access and Kurzweil 3000 Web License client installed.

- YES! That means that Students and Teachers can have access to Kurzweil 3000 at HOME!
 - Personal preferences roam with the user.
- This is NOT a web application. It is a web *license*.
 - Kurzweil 3000 Web License Client CD is installed on each computer.
- Access is limited to number of licenses owned.

Files can now be saved to and opened from the “Web Universal Library” – a shared, secure file repository hosted by Kurzweil Educational Systems.

- Files won't take up space on your computers!
- Files can be easily shared across users, schools, districts, etc.

Assignments & Reporting

- Teachers can now create and assign work to students from within Kurzweil 3000.
- Students can now easily complete and turn in their assignments
- Teachers and Administrators can view reports on student performance
 - Scores on assignments
 - Student and teacher usage data
 - MORE reports will routinely become available online via VPORT

Web Licensing: Reporting

TRACK: Kurzweil 3000 2010-2011 | SCHOOL: Kurzweil | CLASS: Lincoln Elementary

My Results: My Class | Dashboard | Usage | **Assignments** | Word Lookup

Filters: Assignment: World Wide Web | Show: Current Only | Sort by: Last Name

Question 1: What does "surf" mean in this sentence?
 A. ride a wave
 B. search for information
 C. have fun
 D. poor servant
 Possible Answers: A, B, C, D
 Correct Answer: B

Question	1	2	3	4	5	6	7.1	7.2	7.3	7.4	8	Results / Score
Type	MC	TF	TXT	MC	TXT	MC	M	M	M	M	MC	
Answer	B	F	NS	C	NS	A	D	A	C	B	A	6 of 9 66.66%
Ahwell_Zoe	B	F	NS	D	NS	A	A	D	C	B	A	6 of 9 66.66%
Estroven_Yve	B	T	NS	C	NS	A	A	D	C	B	A	4 of 9 44.44%
Imanovich_Will	B	F	NS	D	NS	A	A	C	B	D	A	9 of 9 100%
Ono_Vin	B	F	NS	C	NS	A	D	A	C	B	A	7 of 9 77.78%
Ubard_Tai	B		NS	C	NS	A	B	A	C	B	D	6.4 of 9 71.11%
% Correct	100%	60%	NS	60%	NS	100%	20%	40%	80%	80%	80%	6.4 of 9 71.11%

LEGEND: MC = Multiple Choice | TF = True or False | TXT = Short Answer | M = Matching | NS = Non-Scorable | -- = Not Answered

Licenses are managed via the VPORT Online Data Management System.


- **To use Kurzweil 3000, you must have a VPORT registration.**
 - A Unique User Login is required for every user via registration with VPORT.
 - An “Account Set-Up” form **must** be completed before your Kurzweil 3000 V12 Web License order is processed.
 - Your administrator will receive a “Welcome Package” via email from our Customer Service Department with instructions.
 - **Your District Administrator or Principal must provide you (the teacher) with your unique user name and password. The District Administrator or Principal also sets up all classes.**
 - As a “teacher” you can set up the *students* in your class(es) by selecting from existing students in the database or creating new ones.

VPORT User Role privilege Hierarchy – Descriptions:




- **District Administrator** privilege is needed to set up schools, principals, campus coach, classes, teachers, students
- **Principal privilege** is needed set up teachers, Campus Coach, classes, and students
- **Teacher privilege** is needed to set up students. (Teachers MUST have at least one class in order to create students, assign work to students in that class and view reports.)
- **Student privilege** only has access to their own information.
- **Campus Coach** can set up students and classes and access multiple classes (perfect for AT specialists, inclusion facilitators, resource room educators, etc.)

NOTE: Principals and Administrators will not see the “assignment” icon when logged in to Kurzweil 3000. That is available in Teacher and Student view only.

- Ongoing use of the VPORT Assignment, Reporting and File Storage services will require a yearly maintenance fee. *You can still use Kurzweil 3000 without these services.* (Ask your Sales Representative for more details.)



Web Licensing: Benefits

Increases productive time on task:

- Enables anytime, anywhere learning
- Provides consistent user settings, documents, assignments

Enhances instruction:

- Makes time more efficient and effective
- Organizes documents, assignments, reports
 - Informs data-based decision making
- Enables increasingly individualized instruction

Maximizes return on investment:

- Monitor usage to best deploy support
- Track student progress

Resources available to support you in your use of Kurzweil 3000 Web License with VPORT:

- Videos www.youtube.com/user/cambiumtech
- V12 Web License Datasheet
- Kurzweil 3000 V12 Web License with VPORT User Guide
- Kurzweil 3000 for Windows V12 Web License Guide
- Kurzweil 3000 V12 Web License Account Set Up Form
- Once logged-in to VPORT, you will have access to all of these resources and more available for viewing and download. Just click on the “Support” tab in VPORT.
- Cambium Learning Technologies Teams:
 - Customer Service
 - Technical Support
 - Sales Executives
 - Implementation Services

Hands-On Activity: Kurzweil 3000 V12 Web License with VPORT *Teacher Activity: Setting up Students and Creating Assignments*

1. Login-in as a Teacher:

With V12 Weblicense, you should notice the assignment icon at the top left of your screen.

You will need to use your VPORT User Name and Password.

Notice that you can select the “License Type” for Kurzweil 3000

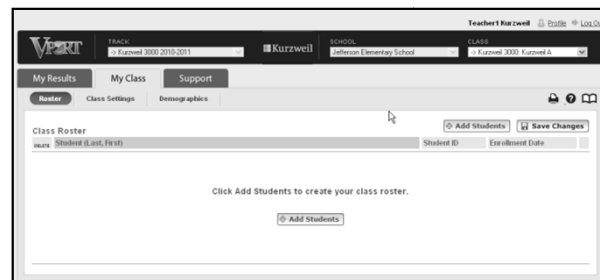
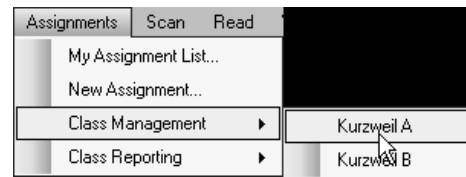
- Color Professional
- Black & White Professional
- LearnStation

NOTE: You can also login to VPORT directly from the VPORT website: www.voyagerlearning.com



2. Set up a Student(s) in your class:

1. Go to Assignment pull-down menu and select “Class Management”
2. Select a class
(NOTE: Only the District Administrator, Principal or Campus Coach has the privilege level to set up classes.)
3. VPORT will automatically open



4. Click on the “Add Students” icon to Add students to your class
5. Add a NEW student to VPORT
6. Type in Last Name, User Name, ID, etc. (Repeat to add additional students.)
7. Always be sure to “save changes”



NOTE: If your students are already registered in VPORT, you can select and find students by typing in the first few letters of their first or last name:



8. Click "Return to Roster" to view student(s) Note the User Name and Password Created:_____

	Last Name	First Name	ID	Grade Level	Birth Date (mm/dd/yyyy)
1	Savage	Charlotte	196919692010	Pre-K	06/23/2010
2				-- select --	
3				-- select --	
4				-- select --	
5				-- select --	

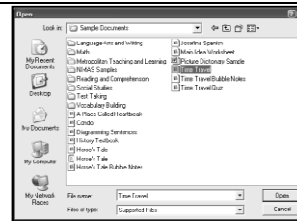
Buttons: Add Rows, Cancel, Save Changes



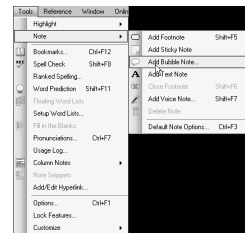
3. Create an Assignment

1. Open a .kes file ("Time Travel.kes" from your "sample documents" folder OR one of your own .kes files from any location.)

NOTE: Multiple Choice, True False and Matching Bubble Note questions are scorable with VPORT. Questions must have a SINGLE answer to be scorable.



2. Embed three (or more) Bubble Note Questions
If you have not added the Bubble note icon to your toolbar, you can access from:
 Tools->Note->Add Bubble Note



OR

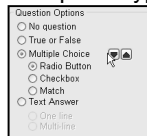


Select Possible "Question Options" or "types":

- a. Multiple Choice
- b. True/False
- c. Matching

For each question:

1. Select "Question Option" type



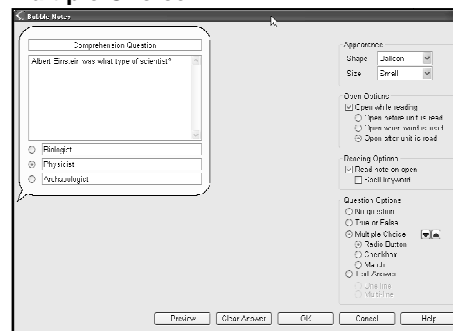
(Use the red "up/down" arrows to add or subtract possible answers)

2. In the spaces provided, type:
 - Title(Optional)
 - Question
 - Possible Answers
3. Indicate the correct answer(s) to the Question(s).

NOTE: When published to the Web Universal Library, the answers will be removed from the student's view.

4. Click "OK"

Multiple Choice:



True/False:

4. SAVE the document to the Web Universal Library.

File->Save to Library

Notice that you can create folders within your library to better organize your files.



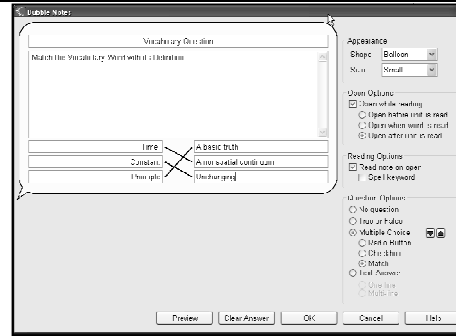
Save to YOUR folder. If you save to the Public folder, others will see the file.

The public folder is a good place to save files that you would *like* others to access.

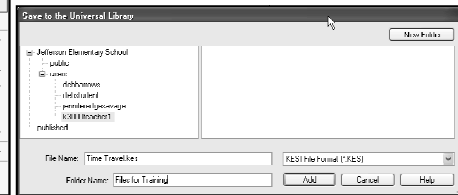
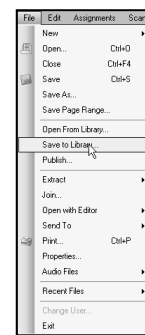
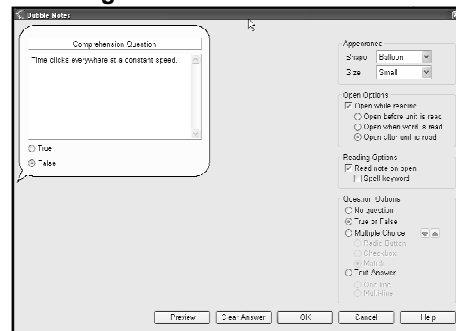
Students can NOT access the files in other student folders.

Teachers CAN access files in student folders.

Once saved to the "Library", this document will be available to the User from *WHEREVER* the user logs in. The file is saved "in the cloud".



Matching:



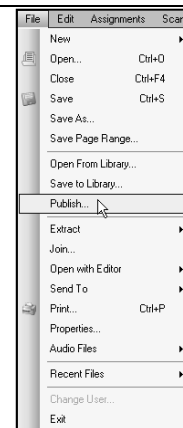
5. Publish Assignment to Web Universal Library

1. File ->Publish

Files MUST be Published in order to later assign them to a student.

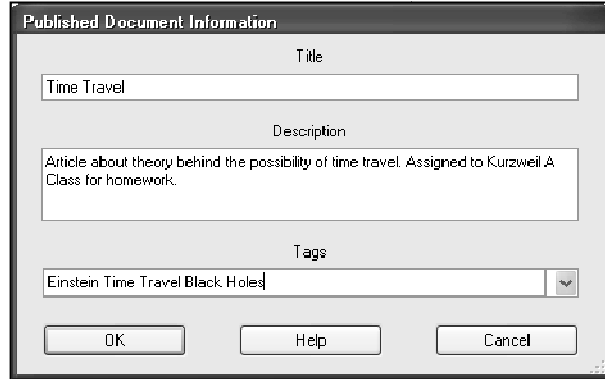
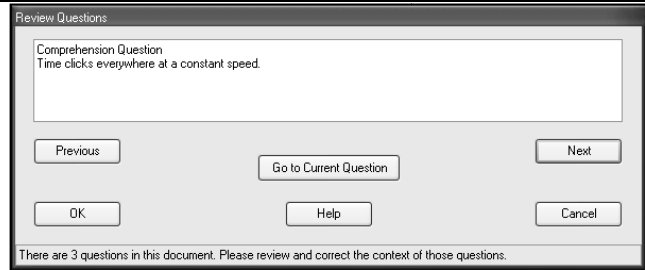
Files can *not* be modified once published.

You can publish any Kurzweil 3000 supported document types.



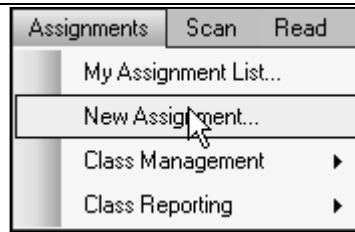
2. Follow prompts to review the first question and the "next" several questions. When done click "OK"

3. Provide Information about the published Document
 - Title
 - Description
 - Tags (Great for searching for documents!)
4. Click "OK". You will automatically be connected to the "published" folder of the Web Universal Library. Create new folder if needed or browse to desired folder and click "save".



6. Assign the Assignment to a student(s)
 1. Click Assignment Menu -> New Assignment

(NOTE: "My Assignment List" will allow you to view ALL Current, Past and Future assignments.)



New Assignment Dialog Box:

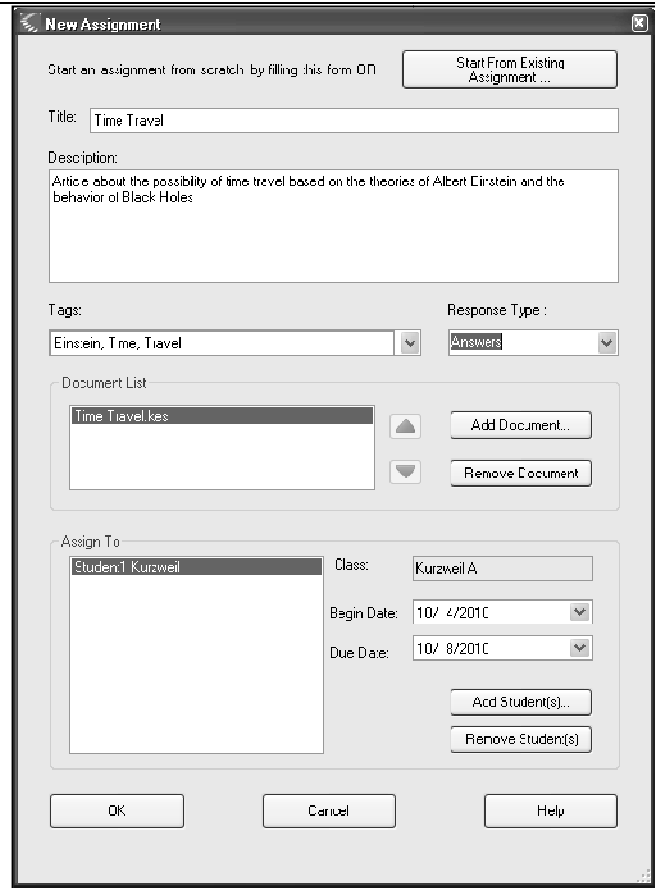
2. The "New Assignment" Dialog box will open. Use this dialog box to enter the following:
 1. Title
 2. Description
 3. Tags (Optional)
 4. Response Type, Select: "Answers" when assigning a "Scorable assignment"

5. **“Add Document”** to select file(s) from the **“Published”** folder.

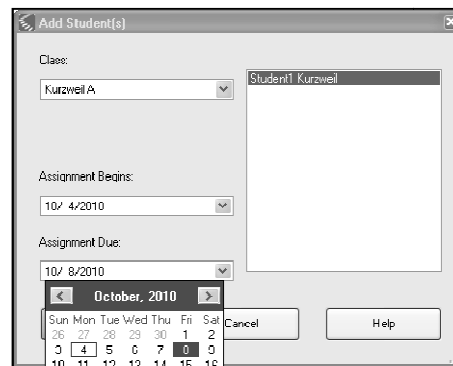
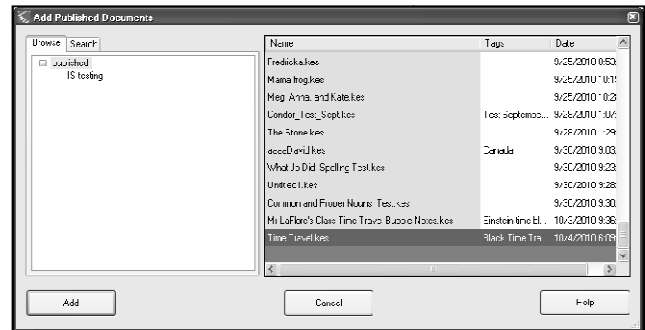
NOTE: Published documents do not have to be scorable. You can also publish written response documents, typical test documents with fill in the blank, a document to just “read”, a column note assignment, etc. You will be able to assign and monitor – but these documents will not be scored.

Can you think of documents you might like to assign to your students?

6. Click **“Add Student”** to assign to a student in your class.
 - o Select Student(s)
 - o Select Assignment Begin and End Dates
7. Click **“OK”**



Selecting from files(s) “Published” folder:

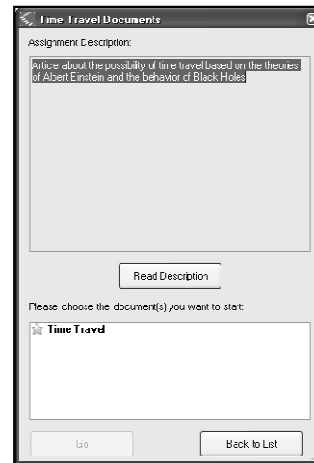
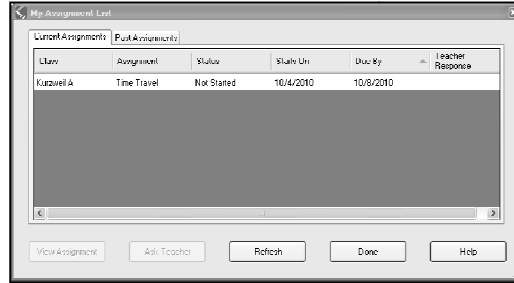


6. Log-Out of Kurzweil 3000	

Hands-On Activity: Kurzweil 3000 V12 Web License with VPORT
Teacher Activity: Student View – Completing an Assignment

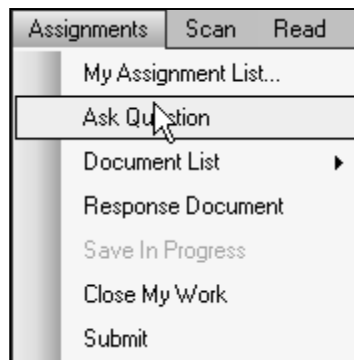
<p>1. Login as a Student Use the User Name and Password of the student you created.</p> <p><i>“My Assignment List”</i> dialog box will immediately pop-up to alert students to their assignments.</p>	
---	--

1. Click on any assignment to select it. Double Click on Assignment to view it OR Click on “view assignment”
2. Click on the assignment document to open it and begin.

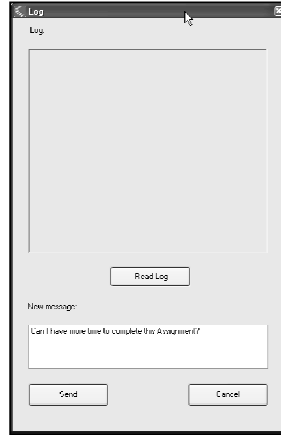


2. Complete the Assignment

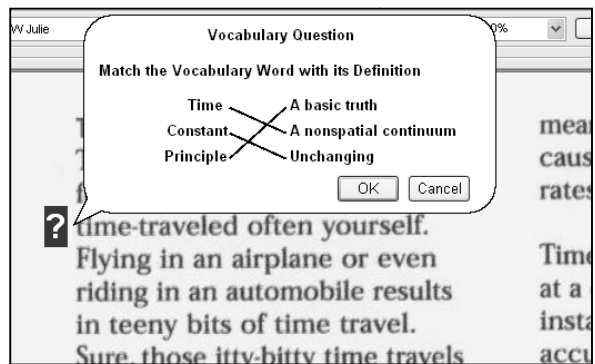
3. The Assignment toolbar will open allowing a student to:
 - a. Open Assignment
 - b. Open response document (if applicable)
 - c. Save assignment
 - d. Close assignment
 - e. Submit assignment
4. Visit the “**Assignments**” pulldown menu to look at options.
 - a. Note that you can **Ask the Teacher a Question** about an assignment or select “**My Assignment List**” to view current and past assignments.
5. Ask a Question



6. Answer the Bubble note questions (You created them as a "teacher").



7. Lookup some words using the Digital DictionaryTool.



8. **Submit** the Assignment

Dictionary Tool:

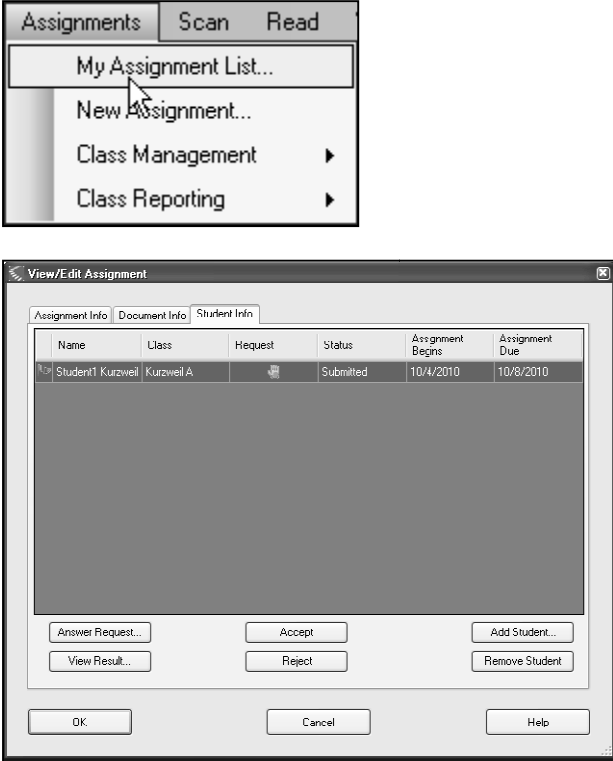


Submit Tool:

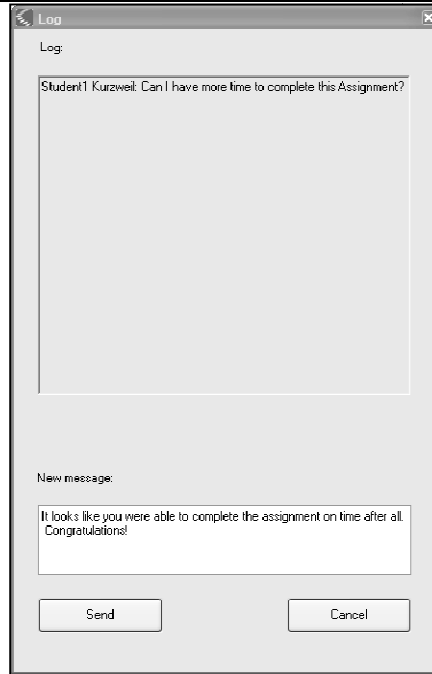


5. Logout of Kurzweil 3000

Hands-On Activity: Kurzweil 3000 V12 Web License with VPORT
Teacher Activity: Monitoring Assignments

<p>1. Login as a Teacher to view assignment(s) received from student(s)</p>													
<p>2. To View your Assignments for students,</p> <p>1. Select: Assignments->My Assignment List</p> <p>2. Click on "Student Info" tab to view status of selected Assignment.</p> <p>3. Accept the assignment.</p> <p>4. Respond to any student "requests" and "Send".</p>	 <p>The screenshot shows the 'Assignments' menu with options: 'My Assignment List...', 'New Assignment...', 'Class Management', and 'Class Reporting'. Below it is the 'View/Edit Assignment' window with tabs for 'Assignment Info', 'Document Info', and 'Student Info'. The 'Assignment Info' tab is active, displaying a table with the following data:</p> <table border="1"><thead><tr><th>Name</th><th>Class</th><th>Request</th><th>Status</th><th>Assignment Begins</th><th>Assignment Due</th></tr></thead><tbody><tr><td>Student1</td><td>Kurzweil</td><td>Kurzweil A</td><td>Submitted</td><td>10/4/2010</td><td>10/8/2010</td></tr></tbody></table> <p>Buttons at the bottom of the window include: Answer Request..., View Result..., Accept, Reject, Add Student..., Remove Student, OK, Cancel, and Help.</p>	Name	Class	Request	Status	Assignment Begins	Assignment Due	Student1	Kurzweil	Kurzweil A	Submitted	10/4/2010	10/8/2010
Name	Class	Request	Status	Assignment Begins	Assignment Due								
Student1	Kurzweil	Kurzweil A	Submitted	10/4/2010	10/8/2010								

5. Click "OK" to finish viewing assignments.



Hands-On Activity: Kurzweil 3000 V12 Web License with VPORT
Teacher Activity: Viewing Reports

1. Viewing Reports

1. From within Kurzweil 3000:

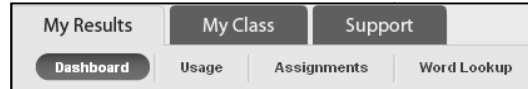
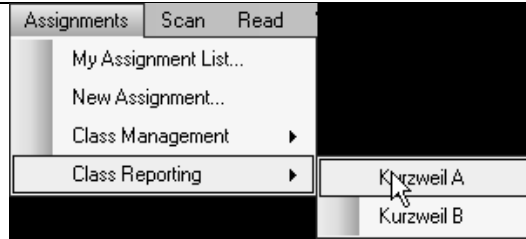
Click:
Assignments pulldown menu->
ClassReporting ->select desired
class

2. VPORT will open in your web browser.
From here, you can fully access VPORT and view reports, manage your class, access support, etc.

3. Click on the “My Results” Tab.
 Notice the Reports currently available:

- Dashboard
- Usage
- Assignments
- Word Lookup
- AND MORE TO COME!

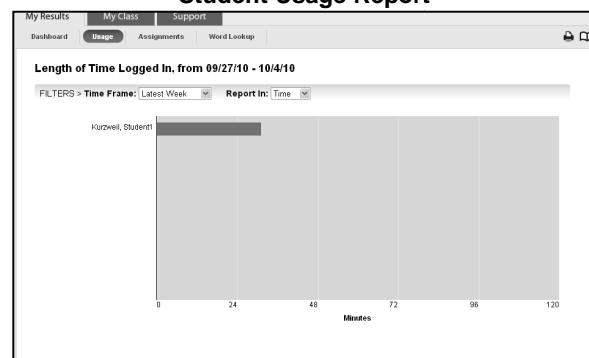
4. Explore the Dashboard, Usage, Assignments and Word Lookup Tabs. Notice the ability to filter reports.



Dashboard Report: Usage and Assignments at a glance



Student Usage Report



Student Response Report:

NOTE: Each part of a “Matching” question is regarded as one question.

5. Things to think about. How would each report be useful to a teacher? A principal? An administrator?

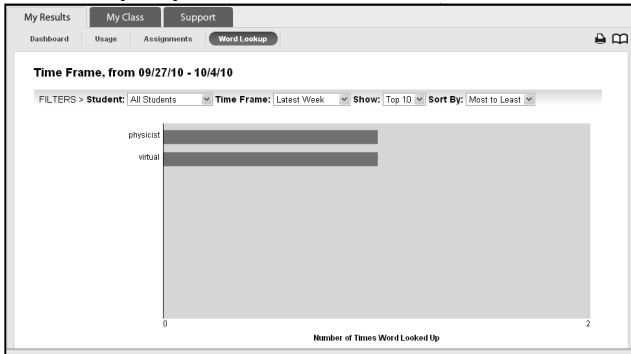
6. Logout of Kurzweil 3000 and VPORT.

The screenshot shows the Kurzweil 3000 VPORT interface. At the top, it displays the user's name (Kurzweil), the school (Jefferson Elementary School), and the class (Kurzweil 3000, Kurzweil A). The main navigation includes 'My Results', 'My Class', and 'Support'. The current view is 'Word Lookup' under the 'Assignments' tab. The interface shows a filter for 'Time Traveled' and a 'Show' button set to 'Current Only'. The question is a 'Comprehension Question' asking 'Albert Einstein was what type of scientist?' with answers 'Biologist, Physicist, Archaeologist'. A table below shows the student's performance on five questions, with a total score of 4 out of 5 (80%).

Question	1	2	3	4	5	Results / Score
Type	MC	TF	M	M	M	
Answer	B	F	B	C	A	4 of 5 80%
Kurzweil Student	B	T	B	C	A	
% Correct	100%	0%	100%	100%	100%	

LEGEND > MC = Multiple Choice TF = True or False M = Matching NS = Non-Scorable -= NOT Answered

Word Lookup Report:



NOTE: Administrators will have access to more than just student data. They will be able to view Kurzweil 3000 use by School, teacher, student, etc. How powerful!!